

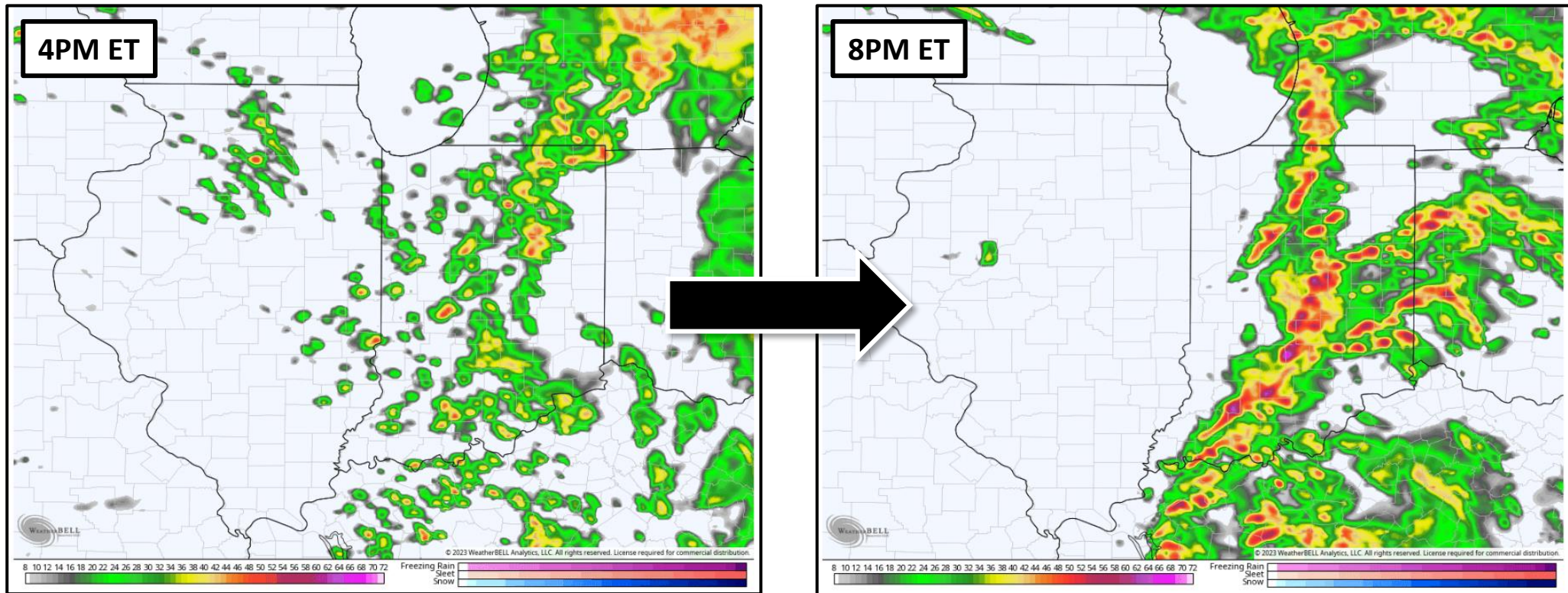
# EVENT FORECAST BRIEFING

Event Name – June 12, 2023



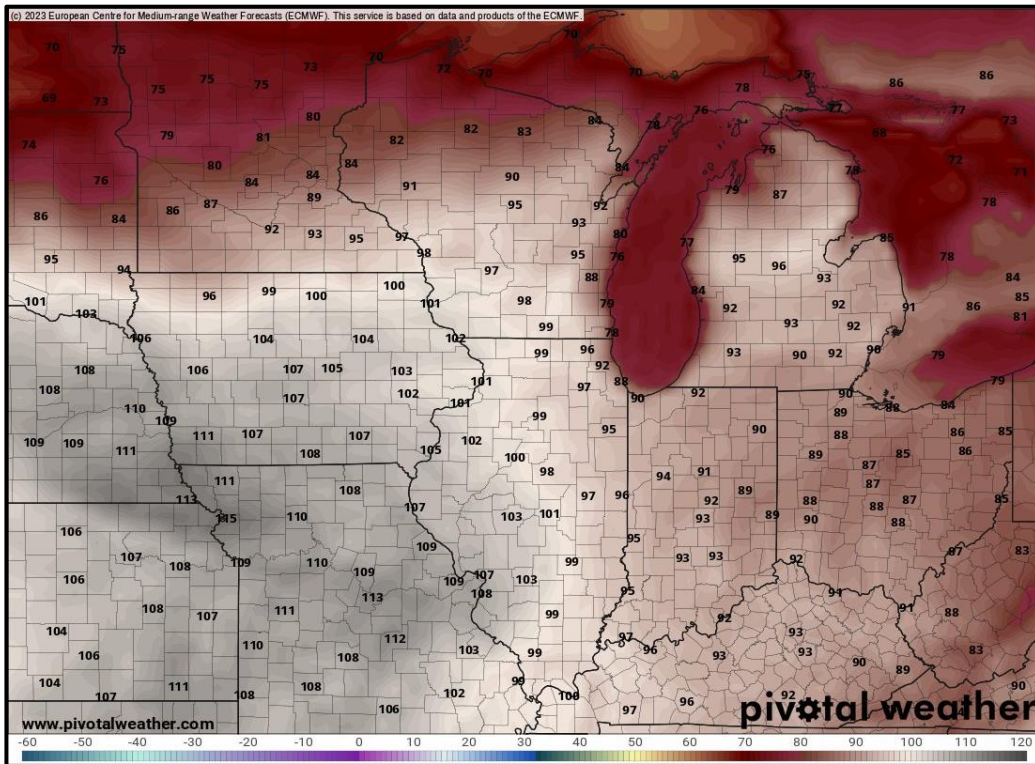
# FORECAST OVERVIEW

Dry conditions will remain in place through the morning hours with skies becoming clear by noon. Clear skies will allow for instability to build through the afternoon, increasing the threat for severe thunderstorms this evening into the early overnight hours. Forecast radar below shows scattered thunderstorms developing by late afternoon and strengthening as they develop into a larger, more powerful line of storms into the evening hours. The line will reach the event area by 7:00pm, with the potential for damaging winds to 70mph, a couple of tornadoes, and small hail.

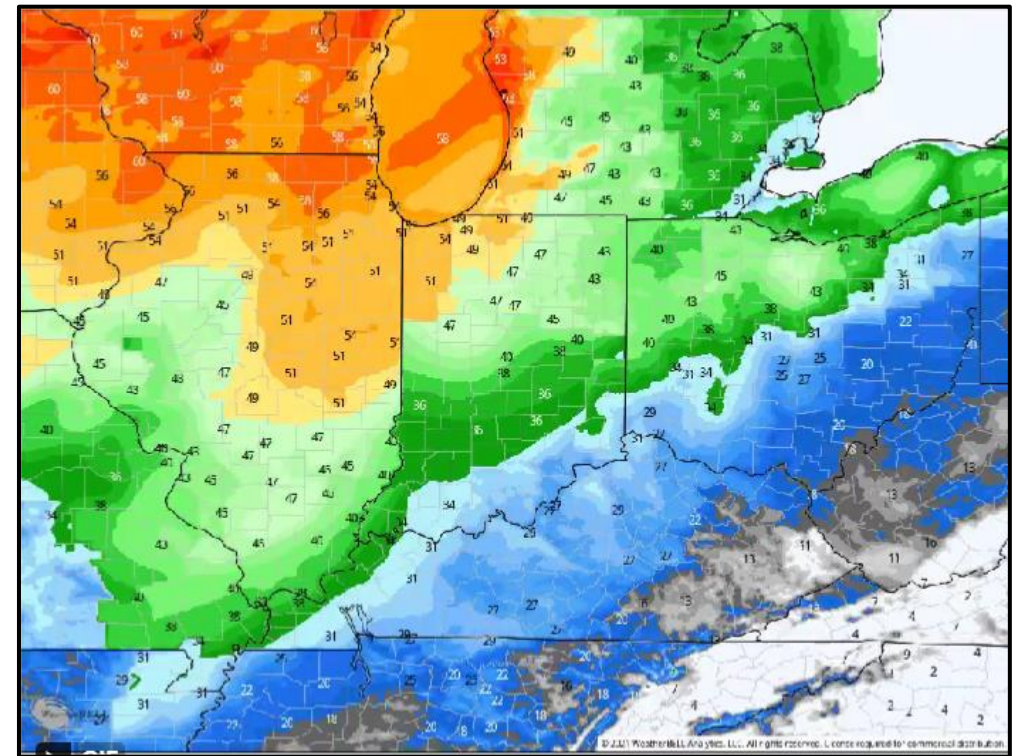


# FORECAST OVERVIEW CONT.

Two additional factors that may pose risks to the event include excessive heat and gusty winds:



Heat indices this afternoon will reach the **lower 90s**.



Non-thunderstorm wind gusts will reach **35-40mph**, with gusts of **60-70mph** possible in thunderstorms.

# FORECAST DETAILS

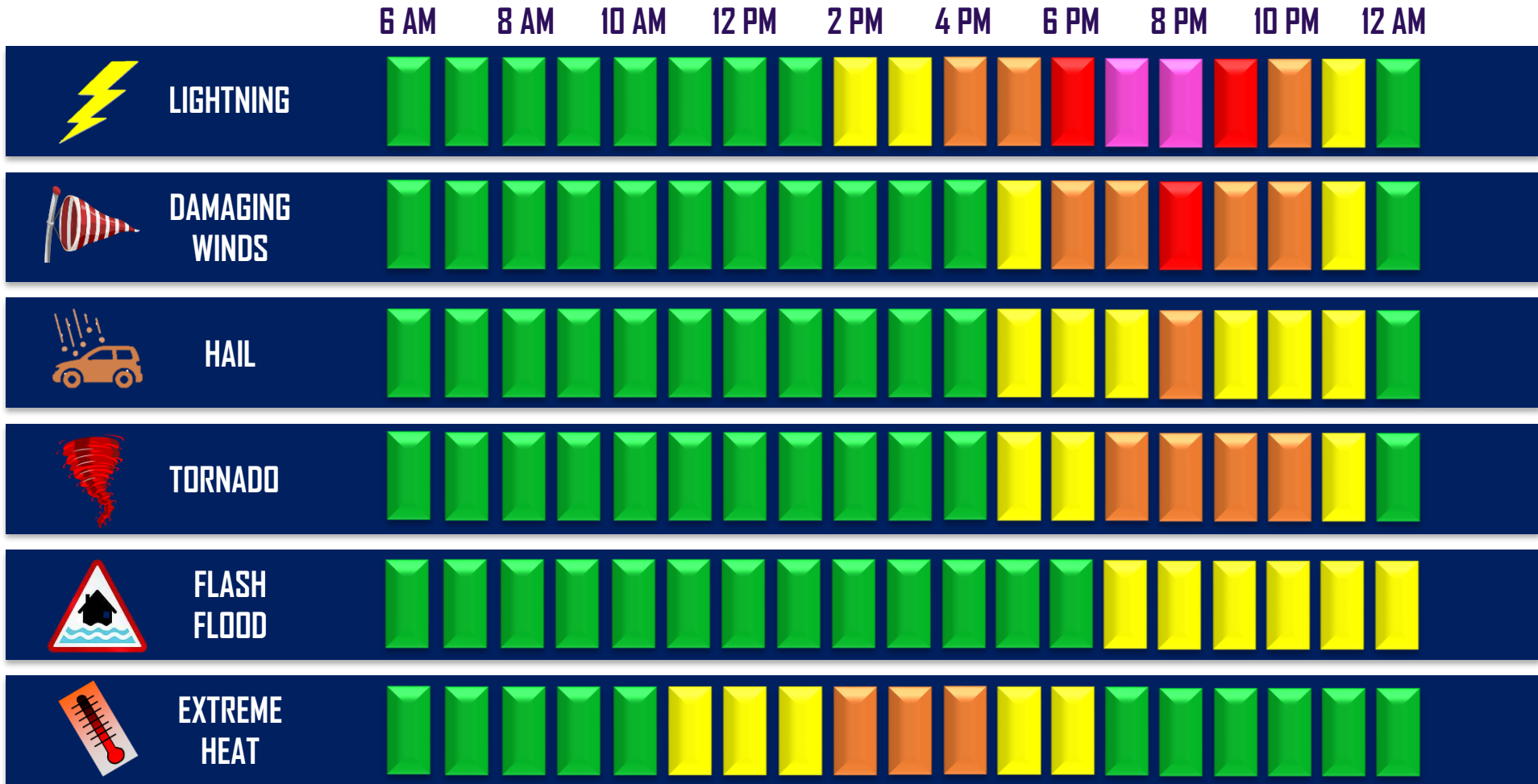


# HOURLY WEATHER CONDITIONS

INDIANAPOLIS, INDIANA – SUNDAY JUNE 12, 2023

	8A	9A	10A	11A	12P	1P	2P	3P	4P	5P	6P	7P	8P
<b>TEMP</b>	67	70	74	79	82	85	87	87	88	85	81	77	75
<b>FEELS LIKE</b>	67	71	77	83	86	89	90	91	94	90	85	80	76
<b>CLOUD %</b>	14	26	30	20	11	3	0	8	16	35	62	86	100
<b>RAIN %</b>	0	0	0	0	0	0	0	2	14	32	65	85	100
<b>T-STORM %</b>	0	0	0	0	0	0	0	3	10	28	51	80	100
<b>HUMIDITY %</b>	65	52	47	45	48	50	64	72	85	92	97	100	100
<b>WIND SPEED</b>	2	2	5	6	8	9	9	14	16	21	24	27	26
<b>WIND GUST</b>	2	4	7	12	15	17	18	20	24	31	37	40	38
<b>WIND DIR</b>	E	E	SE	SSE	SSE	S	S	S	SW	SW	WSW	WSW	W

# HAZARDOUS WEATHER POTENTIAL

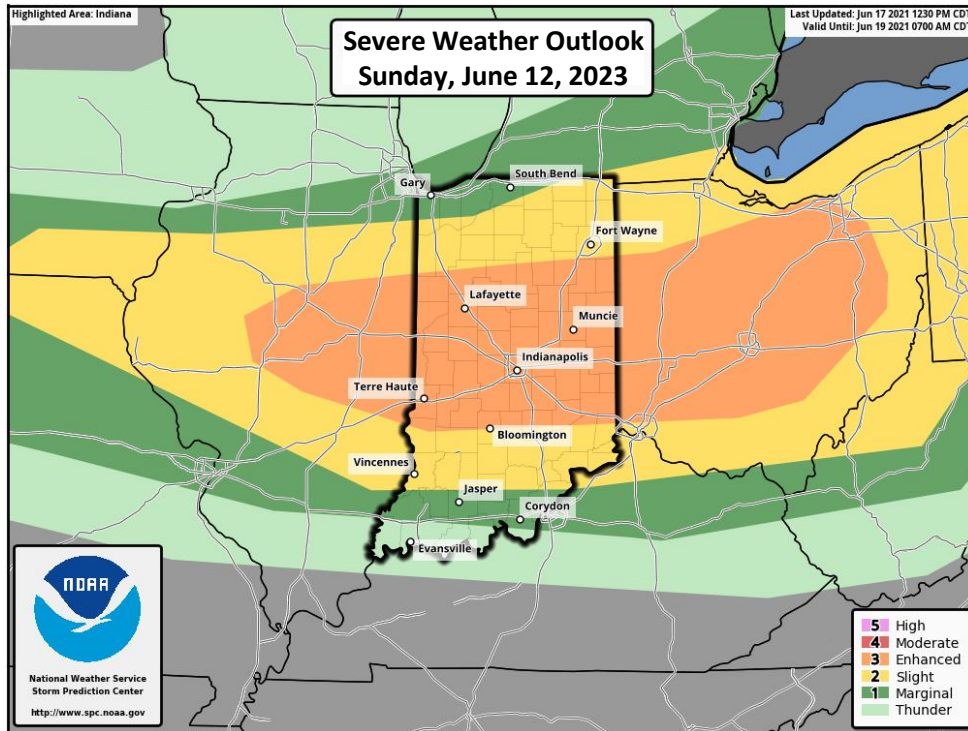


LOW HIGH

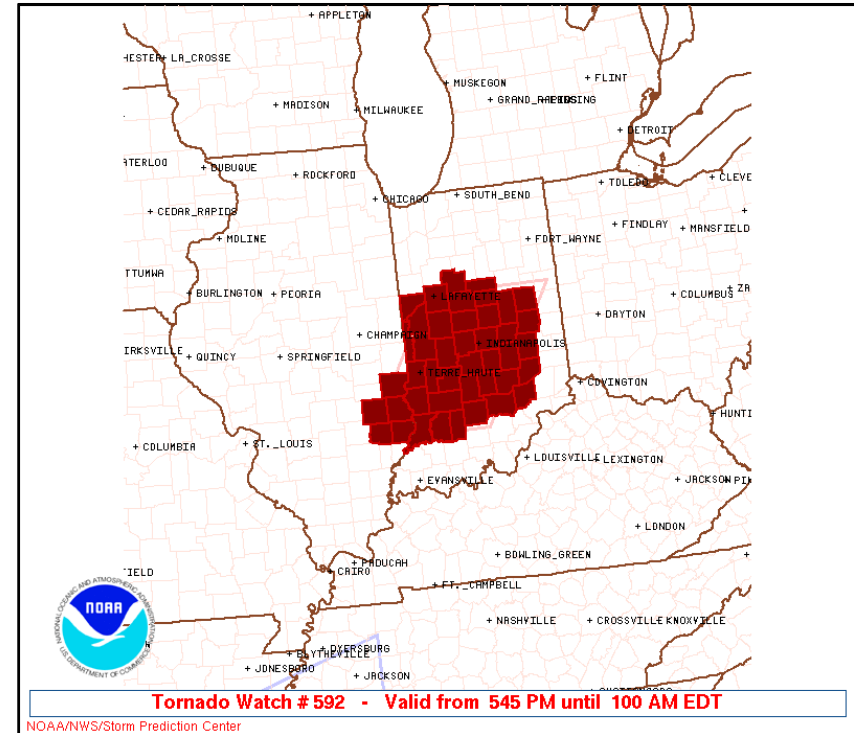
# ACTIVE HAZARDS



# ACTIVE HAZARDS



An **ENHANCED RISK** (level 3/5) for severe weather is in place for this evening across central Indiana, including the Indianapolis area. The risks include damaging winds, a few tornadoes, and small hail.



A **TORNADO WATCH** has been issued ahead of the incoming round of storms this evening into the early overnight hours. The watch is valid from 5:45pm through 1:00am ET.



# QUESTIONS?



[tdsweather.com](http://tdsweather.com)



[info@tdsweather.com](mailto:info@tdsweather.com)

